




# Tulip in Bloom PILLOW

## MATERIALS AND CUTTING

	2" x 2"	(1) 1 3/4" x 1 3/4"	A
	4" x 4"	(4) 1 3/4" x 1 3/4"	B
	1 FQ	(4) 1 3/4" x 6 1/2"	C
		(4) 1 3/4" x 13 3/4"	D
Pillow Backing	1 FQ / print	(2) x 11 1/2" x 16 1/4"	E
Backing	1 FQ	18" x 18"	
Batting		18" x 18"	
Binding	1/4 yard	(2) 2 1/4" x WOF	

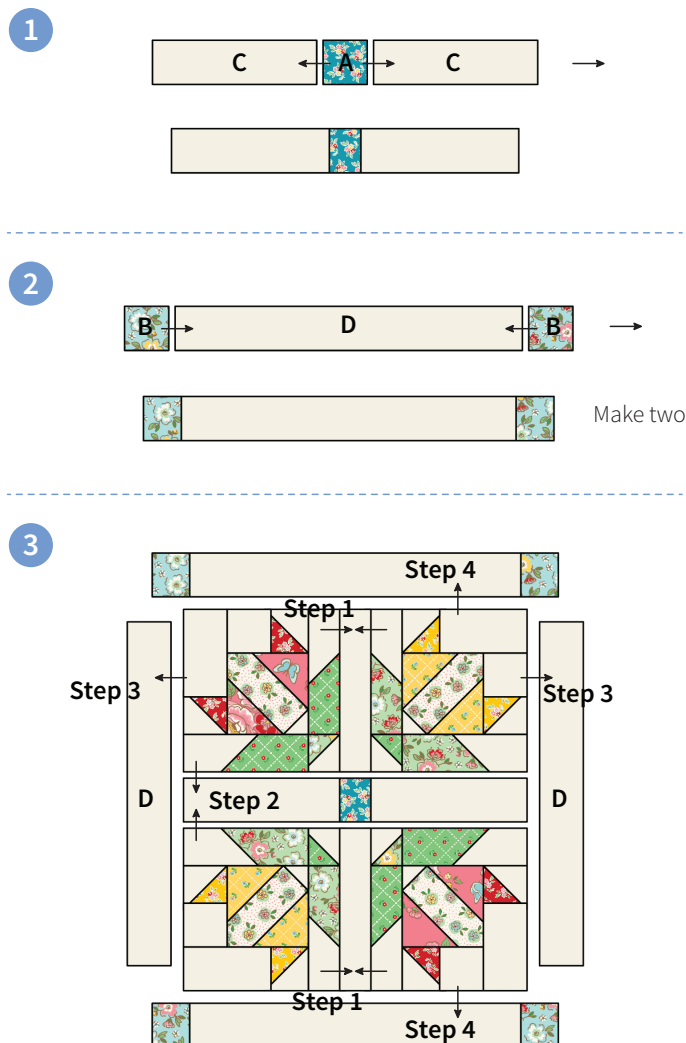
## INSTRUCTIONS

Follow the steps below to assemble the pillow. Use a 1/4" seam allowance and press the seams as shown by arrows.

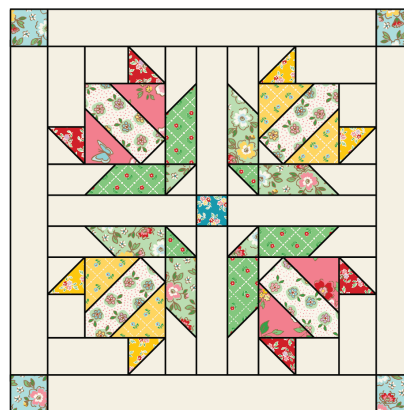
Make 4 *Tulip in Bloom* blocks. The pattern can be found in the Splendid Sampler 2 book. Visit <https://www.thesplendidsampler.com/> for the details.

Fabric is Mon Beau Jardin by Nadra Ridgeway for Penny Rose Fabrics.

## PILLOW TOP

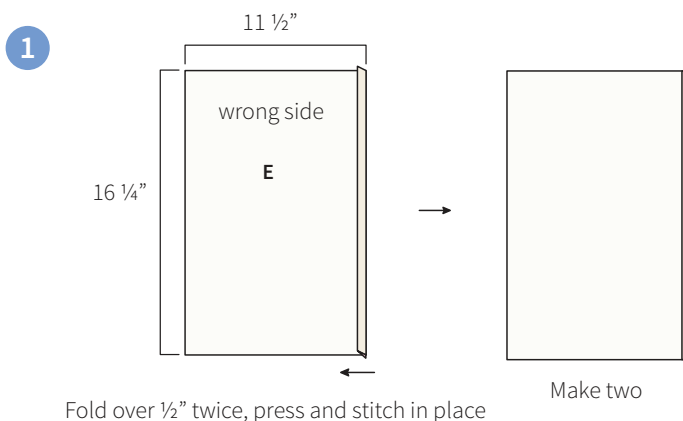


**4**

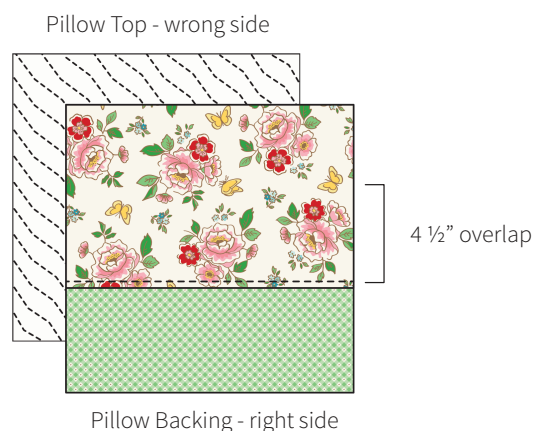


Make a quilt sandwich with your Pillow Top, batting and backing fabric and quilt as desired. Trim excess batting and fabric. The Pillow Top should measure 16 1/4" x 16 1/4".

## PILLOW BACKING



**2**



Align the pillow top and the backing pieces. Pin in place and machine baste 1/8" from the edge.

## FINISHING

Piece the binding strips end to end and bind the pillow using your favorite binding method.

The finished pillow should measure 16 1/4" x 16 1/4".